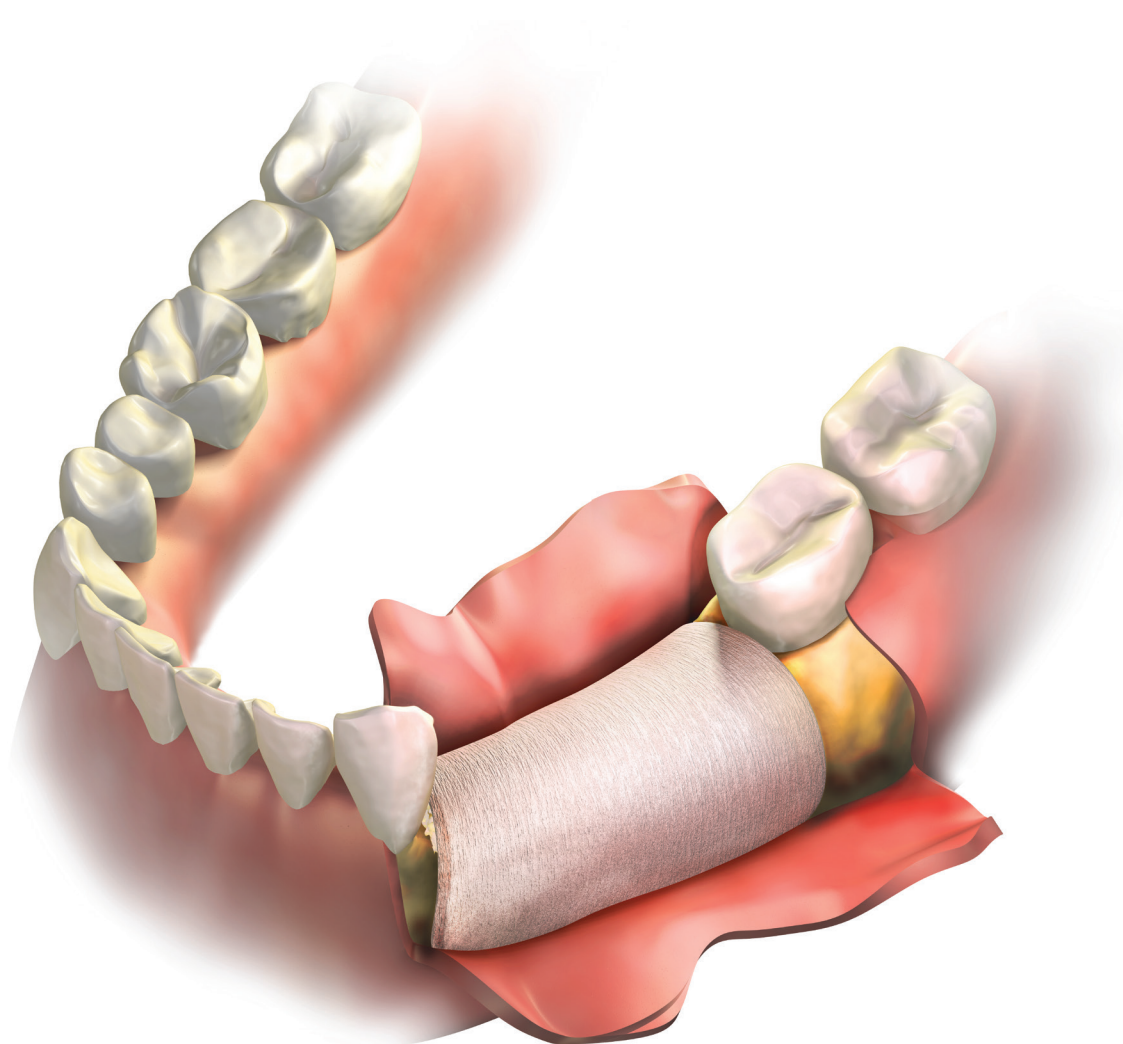




Regenerative
Product Catalog
2022



*Wholesale Solutions for Healthcare Professionals
Salus Medical- Established 2012*



Mineralized Cortical Cancellous 250 - 1000µm Human Allograft



0.25 cc

0.5 cc

1.0 cc

2.5 cc

5.0 cc

Veragraft Allograft Particulate

■ Mineralized Cancellous 250-1000µm

Volume	Order Code
.25cc	3M25025
.50cc	3M25050
1.0cc	3M25100
2.0cc	3M25200

■ Mineralized Cortical 250-1000µm

Volume	Order Code
.25cc	4M25025
.50cc	4M25050
1.0cc	4M25100
2.0cc	4M25200
2.5cc	4M25250

■ Demineralized Cortical Cancellous 250-1000µm

Volume	Order Code
.25cc	7M25025
.50cc	7M25050
1.0cc	7M25100
2.0cc	7M25200
2.5cc	7M25250

■ Demineralized/Mineralized Blend 250-1000µm

Volume	Order Code
.50cc	8V25050
1.0cc	8V25100
2.0cc	8V25200

■ Mineralized Cortical Cancellous 1000-2000µm

Volume	Order Code
.25cc	5M10025
.50cc	5M10050
1.0cc	5M10100
2.0cc	5M10200
2.5cc	5M10250
5.0cc	5M10500

■ Demineralized Cortical 250-1000µm

Volume	Order Code
.25cc	6M25025
0.5cc	6M25050
1.0cc	6M25100
2.0cc	6M25200
2.5cc	6M25250
5.0cc	6M25500

Safety • Quality • Value

Pre-processing and post-processing quality assurance and quality control reviews are performed on all donated tissues. Each donor is approved by DCIDS' to ensure compliance with donor acceptance criterion prior to release. DCIDS' policies and procedures for donor tracking, documentation, tissue processing, allograft packaging and distribution activities are designed and executed in compliance with current FDA regulations ensuring safe, high quality allografts for transplantation.

Raptos Irradiated Bone Particulates, a Natural Scaffold for Bone Regeneration



RAPTOS allograft mineralized bone grafts offer an osteoconductive platform for bone generation and Raptos demineralized particles offer an osteoinductive boost. Used either alone or as part of a composite bone graft, allograft bone particulates supply a natural framework facilitating the attachment of osteogenic precursor cells.

Available in several sizes and varieties

VERAFUSE™ DBM Putty and DBM Crunch

- Made from 100% human bone
- Osteoconductive
- Osteoinductive
- Sterile - gamma irradiated to SAL 10-6

DBM PUTTY 0.7cc Syringe / SKU # VF25070

DBM PUTTY 1.0cc Syringe / SKU # VF25100

DBM PUTTY 2.5cc Syringe / SKU # VF25250

DBM CRUNCH 1.0cc Syringe / SKU # VF10100

DBM CRUNCH 2.5cc Syringe / SKU # VF10250

- Donor recovery and screening performed according to AATB and FDA guidelines
- Crunch consists of DBM putty and cortical cancellous bone chips

DBM PUTTY 5.0cc Syringe / SKU # VF25500

DBM PUTTY 10cc Syringe / SKU # VF251000

DBM CRUNCH 5.0cc Syringe / SKU # VF10500

DBM CRUNCH 10cc Syringe / SKU # VF101000



10x10mm - SKU# P-FLEX 1010

15x15mm - SKU# P-FLEX 1515

15x10mm - SKU# P-FLEX 1710

PentOS OI Flex Cortical Veneer Graft

PentOS OI™ Flex 100% Allograft Flexible Veneer Graft PentOS OI™ Flex is a 1 mm thick osteoinductive, demineralized cortical bone graft. When hydrated, this veneer graft becomes pliable and easily adapts to graft sites that would be difficult to treat with particulate or putty grafts. These characteristics make PentOS OI™ Flex ideally suited for onlay grafting for the repair of shallow bone defects or bone loss.

Features and Benefits

- Pliable and adapts easily to graft sites ideally suited for on lay grafting
- Can be used to augment thin or missing bone over root form implants
- Can be fix ated with screws
- Sterilized using low-dose gamma irradiation 5 year shelf life at ambient storage

OSSIF-i™ sem is a demineralized strip of bone which is harvested from the trabecular bone. Demineralized sponge strips have an extremely porous structure while still reacting elastically under loading conditions. This allows the sponge to be compressed to 1/3 of its original size and return back to its original size after the force is removed. This makes the strip an ideal solution for filling a variety of bone voids. Once placed, the porous architecture of the strip quickly becomes vascularized and acts as an osseoconductive and osseoinductive scaffold for bone formation.

Advantages:

- Soft and easy to manipulate
- Will not perforate soft tissue
- Osseoinductive scaffold
- Typically does not require fixation with screws or tacks

Applications:

- Horizontal & vertical augmentations
- Extraction sockets
- Periodontal defects
- Dental implant grafting



**OSSIF-i sem Demineralized
Sponge Strip (10x6x7mm)**
SKU# BG-024010

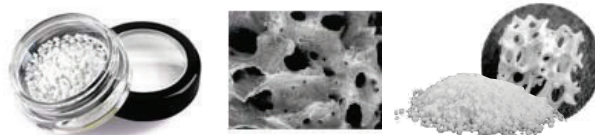
**OSSIF-i sem Demineralized
Sponge Strip (20x6x7mm)**
SKU# BG-024020



Superior Handling

Easy Placement

Great Volume Fill



(250-1000UM) (0.5CC) • SKU# PMC0510
(250-1000UM) (1.0CC) • SKU# PMC1010
(250-1000UM) (2.0CC) • SKU# PMC2010
(250-1000UM) (4.0CC) • SKU# PMC4010

MatrixOss Porcine Cancellous Xenograft Particulate

MatrixOss™ Granules are an osteoconductive, porous, anorganic bone mineral with carbonate apatite structure derived from porcine cancellous bone.

Product Features :

- Carbonate apatite structure – similar to natural bone
- Rough surface/facilitates cell adhesion
- Highly porous
- High volume fill

(1000-2000UM) (1.0CC) • SKU# PMC1020
(1000-2000UM) (2.0CC) • SKU# PMC2020

Raptos® Allograft Bone Blocks

Raptos® cortico-cancellous bone blocks are instrumental in bone volume regeneration for severe bone atrophy cases that require an increase in initial stability for an implant site.

Application:

- Osseous defects

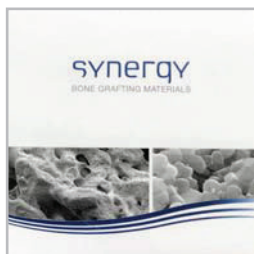
Our cortico-cancellous blocks and wedge combine the stability of a cortical surface with the porosity of a cancellous surface for osteointegration.

Safety Information:

- Each donor is thoroughly evaluated using medical/social history questions, medical records, blood tests, culture results, physical examination and autopsy reports (when performed). This process is used to ensure the donor is suitable for donation by recognizing and excluding potential diseases or medical conditions that are unacceptable.



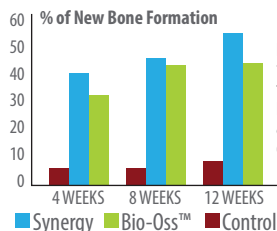
6x6x10mm / SKU# CCBB-06
6x12x12mm / SKU# CCBB-12
7x7x10mm / SKU# CCBB-07
6x12x20mm / SKU# CCBB-20



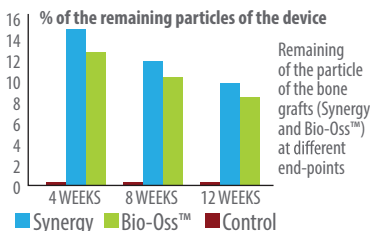
Synergy Bovine Cancellous Xenograft Particulate

Bone mineral matrix for bone grafting A sterile biocompatible anorganic porous bone mineral for use in periodontal, oral and maxillofacial surgery. SYNERGY is a porous bone mineral matrix. It is produced by removal of organic components from bovine bone. Synergy provides a supportive structure for osteoconduction. The presence of pores in Synergy is of great importance for repairing bone defects. It is available in cancellous (spongiosa) granules.

HISTOMORPHOMETRIC RESULTS



New bone formation plot for Synergy and Bio-Oss™ at different end-points



Remaining of the particle of the bone grafts (Synergy and Bio-Oss™) at different end-points

ALPE-840	Small Particle (350-840um)	0.4cc Vial
SYN-CE-840	Small Particle (350-840um)	0.8cc Vial
ESP1G-840	Small Particle (350-840um)	1.6cc Vial
HU2G-840	Small Particle (350-840um)	3.0cc Vial
ALPE-2000	Large Particle (840-2000um)	0.4cc Vial
SYN-CE-2000	Large Particle (840-2000um)	0.8cc Vial
ESP1G-2000	Large Particle (840-2000um)	1.6cc Vial
HU2G-2000	Large Particle (840-2000um)	3.0cc Vial

Bond Apatite® A bone graft cement

Another novel product of Augma Biomaterials Ltd. is a combination of 3D Bond™ with a formula of hydroxyapatite granules. This is a cement-based, osteoconductive composite, synthetic bone substitute that is used for bone reconstruction in a range of dental applications and is intended for filling, augmenting and reconstructing a broad range of defects in the maxillofacial bones.

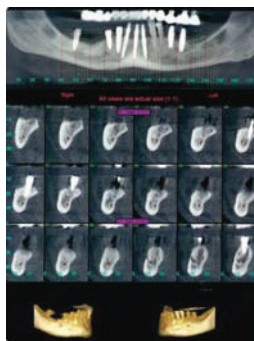
Bond Apatite® is composed of 2 matrices which have different absorption coefficients and characteristics.

The first matrix is biphasic calcium sulfate (3D Bond™) which is absorbed and replaced completely.

The second matrix is a formula of hydroxyapatite granules which serves as longer range space maintainer.

The product guarantees reduced treatment time and convenient manipulation for the clinician, thanks to the product's unique nature and the specially designed syringe.

Bond Apatite® is FDA cleared and CE approved. As of 2015, Bond Apatite® is delivered in a dual-chamber, prefilled syringe, containing the granulated powder and physiological saline. Mixing the powder component with the liquid in the driver results in a viscous composite that is suitable for injection into the graft site. Compared to the previous version of the driver, in which additional accessories had to be used to inject the saline into the driver's head, this new development of the "all-in-one" Bond Apatite® driver ensures easy and more convenient handling by the clinician.



Clinical Case 2: Augmentation using Bond Apatite for large bone reconstruction after removal of hopeless tooth



Bond Apatite®

- Save Time
- Lower Your Cost
- Improve Results!

Advantages:

- Safe and Biocompatible
- Moldable, self-setting cement, attach to and set at the work site
- Simple, easy and enjoyable to work with
- Membrane coverage is not essential as long as the tissue is well stabilized primary closed and properly sutured.

Buy 6 Get 2 FREE!

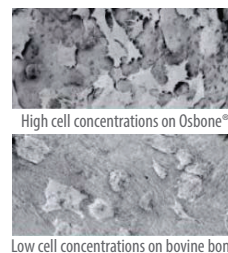


Osborne® Synthetic Hydroxyapatite Granules

OSBONE® Synthetic Hydroxyapatite Bone Filler Hydroxyapatite (HA) is the mineral basis for bone—a natural choice for bone regeneration. However, allogeneic, bovine bone and most manufactured HAs are less than optimal product choices. Osborne® Synthetic Hydroxyapatite bone filler provides the answer for those applications that require volume and a highly stable implant bed.

1000-2000UM (0.5CC) SKU# H05-V1000
1000-2000UM (1.0CC) SKU# H10-V1000
1000-2000UM (2.0CC) SKU# H20-V1000

250-1000UM (0.5CC) SKU# H05-V0250
250-1000UM (1.0CC) SKU# H10-V0250
250-1000UM (2.0CC) SKU# H20-V0250



High cell concentrations on Osborne®

Low cell concentrations on bovine bone

OsteoGen Plugs

Slim Osteogen® Plugs 6 x 25mm

IMP-OPS 1020-5 / 5 Per Box

IMP-OPS 1020-10 / 10 Per Box

Large Osteogen® Plugs 10 x 20mm

IMP-OPL1020-5 / 5 Per Box

IMP-OPL1020-10 / 10 Per Box

Extra Large Osteogen® Plugs 15 x 20mm

IMP-OPXL 1020-5 / 5 Per Box



Collagen plug filled with OsteoGen Bone Graft resulting in the easiest and most affordable way to graft your extraction sites. Just drop the plug into your extraction site following curettage and debridement to induce a regional acceleratory phenomenon and suture over top. Combines our OsteoGen Bioactive Resorbable Calcium Apatite with a bovine Achilles tendon collagen matrix to create a structure that mimics the organic and inorganic components of physiologic bone. Bovine Achilles Tendon collagen carries the bone graft for easy and efficient delivery to the site, eliminating the hassle and time spent mixing and packing particulate grafts while also eliminating the potential for graft wash out. Bioactive and resorbable calcium apatite crystal bone graft that is physiochemically & crystallographically similar to human bone. Type I collagen acts as a wound dressing not only to stabilize the clot, but also to absorb and deliver blood flow to the slowly resorbing graft, a feature critical for the initiation of bone formation and early angiogenesis. The collagen found in the OsteoGen Plug provides a scaffold for keratinized tissue to develop over the grafted site Radiolucent on day of surgery – Radiopaque in 3-6 months Non-Ceramic highly porous crystals physicochemically similar to trabecular bone. Proven safe, reliable and clinically effective for use with implants for over 30 years.

OsteoGen Strips

Resorbable Mineralized Collagen Bone Graft

2 Pack/Large 20mm x 40mm x 3mm

SKU# IMP-OSL

2 Pack/Small 12mm x 20mm x 3mm

SKU# IMP-OSS



Infuses bone graft into a collagen strip to eliminate the problems associated with particulate migration.

Features and benefits include:

- Flexible strips easily conform to the grafting site, eliminating gaps in bony walls.
- Eliminates chance of particulate wash out; crystals are contained in the collagen.
- Use around immediate implant placement to fill gaps between the implant & socket wall.
- Use as a mineralized collagen cover to contain particulates in extraction sites.
- Use for sinus lifts instead of particulates.
- Easy and effective ridge expansion, can be curved over a narrow ridge for added width.
- Can be folded or layered to create added volume and packed into defect space.
- Extremely porous and hydrophilic.
- Can be used as a mineralized scaffold for added growth factors or autologous serum.
- Available in two sizes: Large - 20 mm x 40mm x 3mm
Small - 12mm x 20mm x 3mm.

Buy 5 Get 1 FREE!

OR

**BUY 5 BOXES OF OSTEOGEN PLUGS* AND
RECEIVE A FREE EXTRACTION KIT**

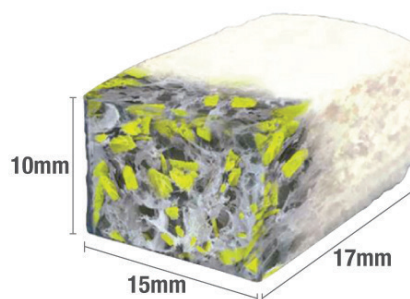
*Can Mix Large or Slim



OsteoGen® Malleable Bone Block

Specifications:

- Material: Type 1 bovine collagen infused with calcium apatite.
- Dimensions: 10x15x17mm
- Resorption Time: 4-6 months
- Packaging: 2/box
- The Bovine Achilles Tendon collagen carries the graft for easy and efficient delivery to the site, eliminating the hassle and time spent mixing and packing particulate grafts while also eliminating the potential for graft wash out.
- OsteoGen® is a bioactive and resorbable calcium apatite crystal graft that is physicochemically & crystallographically similar to human bone.
- OsteoGen® Block is used in onlay grafting procedures and is adaptable to the contours of defect site.
- Decorticate the site (make bleeders) and deliver the Block to allow absorption of blood flow.
- The Type I collagen absorbs and deliver blood flow to the slowly resorbing graft, a feature critical for the initiation of formation and early angiogenesis.
- Non-Ceramic highly porous crystals physicochemically similar to trabecular bone.
- OsteoGen® Crystals and crystal clusters proven safe, reliable and clinically effective for use with implants for over 30 years.

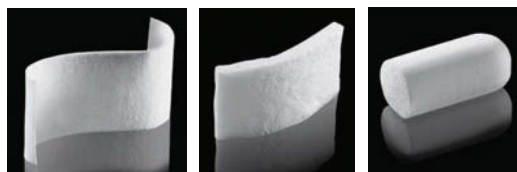


2 Pack / SKU# OBB1015-2

HeliTAPE, HeliCOTE and HeliPLUG Wound Dressing

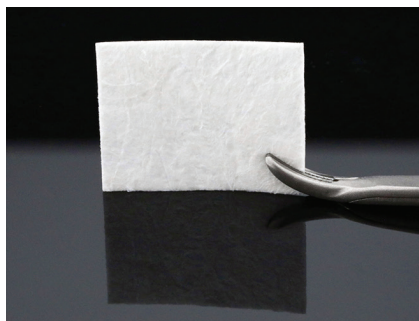
Features Benefits

- Available in 3 shapes
- Helps control bleeding
- 10 to 14 day absorption rate
- Sterile, individually packaged, 10/box
- Provides clinician with the appropriate size material for the procedure
- Stabilizes the wound during the healing process
- Promotes healing at the defect site
- Helps to reduce tray set-up time



Cat.#	Description Size	Qty.
62-200	HeliTAPE Collagen Wound Dressing 1in x 3in	10 Box
62-201	HeliCOTE Collagen Wound Dressing 3/4in x 1.5in	10 Box
62-202	HeliPLUG Collagen Wound Dressing 3/8in x 3/4in	10 Box

Miltex Helimend Bovine Collagen Membranes



Resorption **4 to 8 Weeks** **Up to 18 Weeks**
 15mm x 20mm
 20mm x 30mm
 30mm x 40mm

Features

- Available in 3 sizes
- Excellent handling characteristics
- Wound stabilization
- Longer absorption rates
- Creates space during guided tissue regeneration
- Sterile, individually packaged, 1/box

Benefits

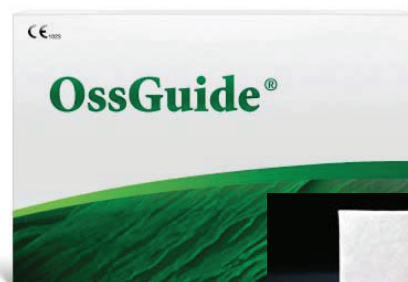
- Provides clinician with the appropriate size material for the procedure
- Material is pliable and does not become slippery when hydrated
- Helps control bleeding and develop blood clot
- Helps to reduce tray set-up time

OssGuide® Absorbable Porcine Collagen Membrane

OssGuide® is a resorbable collagen membrane derived from purified porcine peritoneum. This membrane was designed to provide superior barrier function, while maintaining ideal handling characteristics. Once hydrated, the OssGuide® collagen membrane is pliable yet strong. This ensures that clinicians can easily stretch the membrane without tearing. This makes the OssGuide® the ideal membrane for tenting and a variety of other GTR and GBR procedures. The OssGuide® membrane has high porosity which supports excellent blood supply at the surgical site. This helps ensure optimal tissue integration.

Product Features

- Material: Type 1 porcine peritoneum
- Resorption time: 3-4 months
- Fast hydration and excellent tensile strength
- Good adaptation to various defects
- Excellent tear resistance
- Prolonged barrier function and duration
- Excellent assistance for fast blood supply to the defect
- Lower incidence of soft tissue dehiscence
- Includes: 1/box



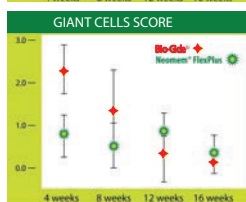
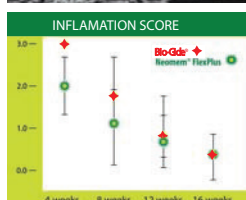
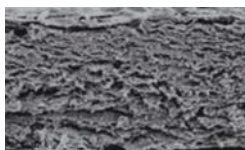
15x20mm SKU# OG1520
 20x30mm SKU# OG2030
 30x40mm SKU# OG3040

Buy 5 Get 1 FREE!

Neomem® FlexPlus Native Porcine Collagen Membranes

Strong performance with a supple touch

Neomem® FlexPlus, is a single layer collagen membrane derived from porcine peritoneum. Suture pullout testing has shown this membrane to be biomechanically strong yet conformability evaluations demonstrate the ability to adapt to the contour of the surgical site. Neomem® FlexPlus hydrates quickly and handling characteristics make surgical placement easy. It can be repositioned easily and placed wet or dry and with either side up. Additionally, in-vitro testing of Neomem® FlexPlus shows low tissue inflammation and foreign body giant cell responses.



*Published in Science, Technology, Innovation, Feb. 1-5, 2015. All trademarks are the property of their respective owners.

Stronger

- Neomem® FlexPlus has 3 times the suture pull out strength compare to Bio-Gide® and resorption time of 3-4 months. Neomem® FlexPlus can be positioned once placed.

Supple

- Lack of memory means that Neomem® FlexPlus drapes and conforms to the defect site and since both sides are the same, it is easy to place.

Better Initial Resorption Rate

- Compared to Bio-Gide®, Neomem® FlexPlus initial in-vivo resorption profile suggests that Neomem® FlexPlus is more stable.

Less Inflammation

- In-vivo testing also demonstrates that Neomem® FlexPlus produced a lower level of early inflammation than Bio-Gide® and Neomem® FlexPlus shows a lower level of a giant cell response.



15 x 20mm 20 x 30mm 30 x 40mm

Advantages

- High suture pull out strength
- Excellent draping
- Lower inflammation
- 3-4 month
- Easy handling

Neomem® ECM | Processed Porcine Mesothelial Tissue

Neomem® ECM is an extracellular matrix in sheet form with a combination of strength and tissue regeneration properties with minimal antigens. Because Neomem® ECM is more than just collagen, the extra proteins support soft tissue healing and remodeling into natural tissue as the matrix is absorbed.

Overview:

The Extracellular Matrix (ECM) is a three-dimensional network of extracellular macromolecules, such as collagen, enzymes, and glycoproteins.

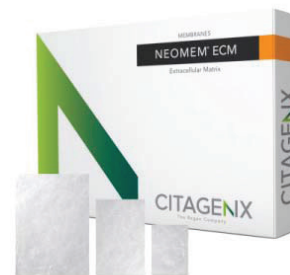
1. ECM has been found to support regrowth and healing of tissue.
2. Neomem ECM maintains it's desirable structural characteristics for cellular proliferation, ideal for the following applications:
 - Guided tissue regeneration procedures in periodontal defects
 - Augmentation around implants
 - Provides architecture and protection for bone regeneration and soft tissue aesthetics
 - Alveolar ridge reconstruction for prosthetic treatment

Excellent handling characteristics:

- Drapes easily to surgical site without adhering to itself
 - Sheet form ECM have natural elasticity characteristics
- 3 year shelf life from date of sterilization. Resorption time: 6 months**

Features / Biologic Characteristics:

- Cytokines retained in preparation include:
- Vascular endothelial growth factor (VEGF), fibroblast growth factor (FGF) and transforming growth factor beta (TGF-beta)
- Levels of VEGF and TGF-beta in Neomem ECM shown to be higher than those found in decellularized small intestinal submucosa (SIS)*Natural structure preserved
- Techniques used for processing and sterilization of the ECM maintains its desirable structural characteristics for cellular proliferation throughout the membrane.



30 x 40mm 20 x 30mm 15 x 20mm
SKU# NX3040 SKU# NX2030 SKU# NX1520

Neomem® Bovine Collagen Membrane

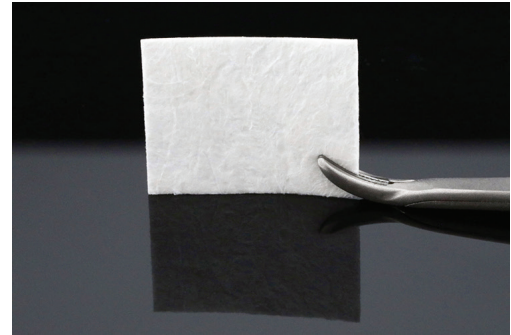
Resorbable collagen membrane derived from highly purified type I collagen fibers from bovine achilles tendon.

Characteristics

- Cell occlusive
- Allows nutrient transfer
- Optimized flexibility and rigidity
- Either side can be placed towards the soft tissue or bone
- Easily trimmed and placed, wet or dry
- Gamma irradiated to sterilize
- Fixated with sutures or tacks
- Nonpyrogenic
- Suture pull out strength between 290g and 350g
- Resorption 26 to 38 weeks

Applications

- GTR
- GBR



15 x 20mm SKU# N1520
20 x 30mm SKU# N2030
30 x 40mm SKU# N3040



15 x 20mm SKU# 20650-01
20 x 30mm SKU# 20650-02
30 x 40mm SKU# 20650-03

CollaGuide™ Collagen Membrane

Excellent handling, flexibility, and malleability for both Guided Tissue Regeneration (GTR) and Guided Bone Regeneration (GBR) procedures.

- **Fibrillar Matrix Strength**—Membrane Strength
- **Maintains Structural Integrity**—Ease of Use/Less ChairTime
- **No Chemical Cross-linking**—for an optimal healing environment

As the barrier resorbs, fibrils that make up the membrane separate, creating a matrix that allows fibroblast infiltration and cellular attachment. CollaGuide™ is:

- **Easy to handle**—Resilient & Non-Friable
- **Easy to place**—Translucent & Pliable
- **Convenient to use**—Offered in 3 sizes

Resorbable Pericardium Membranes

Advantages

- Fully resorbable pericardium membrane providing strong and stable protection of the graft site during healing
- Adapts well to the graft site, maintaining shape and size when placed
- In addition, the membrane is easy to handle, making it an excellent choice for most clinical indications

Safety Information

- Each donor is thoroughly evaluated using medical/social history questions, medical records, blood tests, culture results, physical examination and autopsy reports (when performed). This process is used to ensure the donor is suitable for donation by recognizing and excluding potential diseases or medical conditions that are unacceptable.



SteriGraft™ 15 x 20mm SKU# BBA-720
SteriGraft™ 20 x 30mm SKU# BBA-721
SteriGraft™ 30 x 40mm SKU# BBA-722

NeoDerm ADM Acellular Dermis Membrane

NeoDerm ADM Acellular Dermis are decellularized to remove cellular components and preserve the biological properties that promote revascularization and repair. Neoderma ADM acellular dermis, has the natural elasticity of human skin. Neoderma ADM is minimally processed to remove epidermal and dermal cells while preserving the extracellular matrix of the dermis. The grafts are freeze-dried and sterilized providing 2 years of shelf life at room temperature. Neoderma ADM is available in a variety of sizes and can be shaped with scissors or a scalpel.

APPLICATIONS

Replacement of damaged or inadequate tissue for the repair, reinforcement, or supplemental support of soft tissue defects.

FEATURES AND BENEFITS

- Natural elasticity of human skin
- Minimally processed
- Can be shaped with scissors or a scalpel
- 2 years of shelf life at room temperature

RESORPTION TIME

- 3 - 4 months

AVAILABILITY

- 10 x 10 mm, 20 x 10 mm, 10 x 40 & 20 x 40 mm (0.9 - 1.6 mm thickness)



10x10x1mm SKU# ADM1010-T

20x10x1mm SKU# ADM2010-T

40x10x1mm SKU# ADM4010-T

40x20x1mm SKU# ADM4020-T

Dual Layer Amnion Membranes



A Simply Remarkable Tissue! Amnion is a placental tissue that surrounds and protects the fetus during development in utero. The properties of amnion that benefit the fetus also make it an effective material for protecting a wide variety of wounds, while at the same time creating an environment conducive to the regeneration of healthy tissue. Repurposing this versatile tissue to improve outcomes in wound management is supported by studies in published literature, which describes its successful and safe clinical use.

Amnion membranes consist primarily of fibrillar and membranous collagens, elastin, and a mix of growth factors and cytokines that provide the properties unique to placental tissues.

10x10mm SKU# BBA-81010

10x13mm SKU# BBA-81013

10x25mm SKU# BBA-81025

15x20mm SKU# BBA-81520

20x20mm SKU# BBA-82020

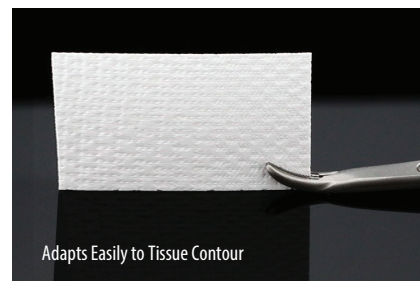
20x30mm SKU# BBA-82030

Cytoflex Resorb Synthetic Resorbable Membrane

Micro porous Cytoflex® Resorb membranes consist of three integral layers. The embossed gingival interface layer is designed to promote gingival tissue attachment. The middle layer is constructed of long lasting fabric filament to prevent fibroblast down growth. The defect interface layer is made to enhance adherence to the surrounding defect surface and to prevent fibroblasts from reaching the wound. All three micro porous layers are structurally integrated, resulting in a flexible membrane with superb handling properties and high nutrient permeability. Made of biocompatible poly (lactide-co-glycolide) copolymers, Cytoflex® Resorb membrane is non pyrogenic, non-immunogenic and maintains a barrier framework for up to 4 months after implantation. The material is completely dissolved within 6 months. The resorbable membrane does not require a second retrieval procedure.

FEATURES AND BENEFITS

- Easily adaptable
- Up to 4-month barrier function
- High regenerative capacity
- Non-pyrogenic, non-immunogenic



Cat. ID#	Product	Package
C03-0301	Resorb	12mm x 24mm-1 Per Pack
C03-0201	Resorb	20mm x 25mm-1 Per Pack
C03-0101	Resorb	30mm x 40mm-1 Per Pack

EpiGuide PLA Synthetic Resorbable Membrane



18x30mm SKU# 50600-03

Unique 3-layer technology

The Epi-Guide Bioresorbable Barrier Matrix is a synthetic dental membrane designed for use as an adjunct to periodontal restorative surgeries and assists in the regeneration of bone and periodontal support tissues. It is a porous, three-dimensional matrix fabricated from a bioresorbable polymer with a long history of safe medical use. The barrier's three-layer construction is designed to attract, trap, and retain fibroblasts and epithelial cells while maintaining space around teeth for development of bone and periodontal support tissues. The Epi-Guide maintains its architecture and structural integrity for 20 weeks after implantation with complete bioresorption between 6-12 months.

- **High-Tech Architecture**—Maintains Space / Helps Arrest Epithelial Migration
- **Synthetic Construction**—Avoid Risks of Disease from Biological Products
- **Completely Resorbable**—Second Surgery Unnecessary to Remove Membranes

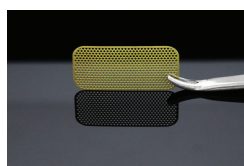
Cytoflex Tef Guard® PTFE Membranes

PTFE Smooth / Unicare Biomedical

Cat. ID#	Product	Package
C01-0301	TEF-001	12mm x 24mm - 1 Per Pack
C01-0305	TEF-001	12mm x 24mm - 5 Per Pack
C01-0101	TEF-002	25mm x 30mm - 1 Per Pack
C01-0105	TEF-002	25mm x 30mm - 5 Per Pack

PTFE Textured / Unicare Biomedical

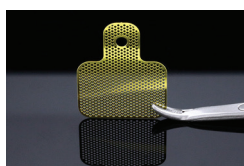
Cat. ID#	Product	Package
C04-0101	TEX-100	12mm x 24mm - 1 Per Pack
C04-0105	TEX-100	12mm x 24mm - 5 Per Pack
C04-0201	TEX-200	25mm x 30mm - 1 Per Pack
C04-0205	TEX-200	25mm x 30mm - 5 Per Pack



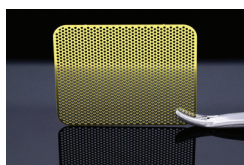
SKU# C02-4101



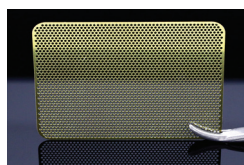
SKU# C02-4201



SKU# C02-4301



SKU# C02-4401



SKU# C02-4501

Cytoflex® Titanium Mesh

Advantages:

- Ultra-thin, smooth, pure titanium mesh reduces irritation
- Easily conforms to tissue contours
- Compatible with bone tacks and screws
- Golden color is aesthetically compatible with gingival tissue
- Comes with a hole to fit bone screws easily!

12mm x 25mm SKU# C02-4101 - 1 Pack

12mm x 25mm SKU# C02-4201 - 1 Pack

20mm x 25mm SKU# C02-4301 - 1 Pack

25mm x 30mm SKU# C02-4401 - 1 Pack

30mm x 40mm SKU# C02-4501 - 1 Pack

Titanium Reinforced PTFE Membrane

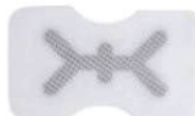
Ti-Enforced™ PTFE membranes are a multi-layer, non-resorbable membrane intended to be surgically placed under the muco-periosteum to aid in tissue regeneration in accordance with the guided tissue regeneration principle. It is a passive, non-load bearing material with a titanium frame enclosed within two exterior layers of PTFE material. The titanium reinforcement is intended for space and shape maintenance to contain bone grafting material and to minimize graft movement during wound healing. The membranes are designed to reduce the migration and establishment of gingival tissue derived cells into bony defects sites, thus providing more favorable environment for neovascularization and bone derived cells to repopulate and repair the defect.



12x24mm ANTERIOR NARROW
SKU# C05-0301



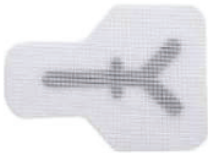
13x20mm PERIO
SKU# C05-0101



14x24mm ANTERIOR SINGLE
SKU# C05-0501



18x29mm LARGE ANTERIOR SINGLE
SKU# C05-0701



19x26mm BUCCAL
SKU# C05-0901



20x25mm POSTERIOR SINGLE
SKU# C05-1301



20x25x36mm POSTERIOR SINGLE
WINGED SKU# C05-3501



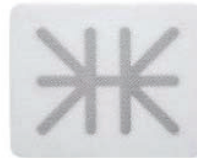
25x30mm POSTERIOR LARGE
SKU# C05-1701



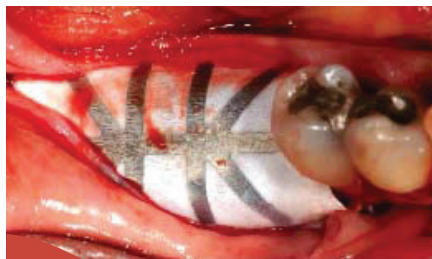
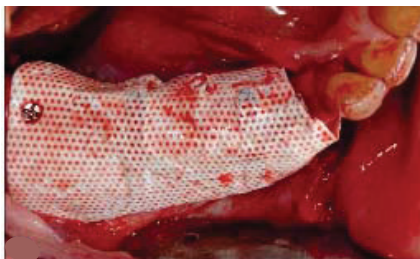
25x30x41mm POSTERIOR LARGE WINGED
SKU# C05-3901



27x29mm LARGE BUCCAL
SKU# C05-1101



32x40mm EXTRA LARGE
SKU# C05-4101



Helistat Resorbable Collagen Hemostatic Sponge—18/Box

Helistat is a soft, white, pliable, non-friable absorbent sponge. Because of its nonfriable coherent sponge structure, the application of Helistat hemostatic sponge to the site where hemostasis is desired is easily controlled. Unwanted dispersal over the operatives is not encountered.

Dimensions: 1 x 1/2in*

*Compare to Gelfoam and Surgifoam

SKU# HE-1690-ZZ



SKU# P-ACRYL5(V)CEHV

Glustitch PeriAcryl High Viscosity Multi-Use Tissue Glue Kit

5ml, 50 Pipettes, Autoclavable Tray
PERIACRYL VIOLET TISSUE ADH

- High viscosity
- 9 times thicker than regular viscosity PeriAcryl90
- Developed using feedback from periodontists
- Increased control for precision application and less waste
- Same trusted set time and strength as PeriAcryl90 standard viscosity
- Same user friendly delivery system as PeriAcryl90 standard viscosity
- Two year shelf life.

SURGI-STOP™ Soluble Hemostatic Gauze

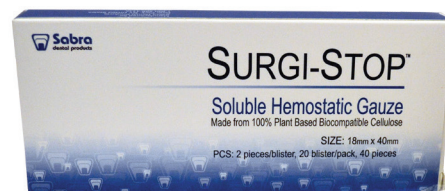
Surgi-Stop™ hemostatic matrix is ideally suited to control the significant bleeding associated with tooth extractions and other intra-oral procedures in general dentistry. Surgi-Stop™ is a sterile product ready for immediate use out of the package, and can quickly and easily be cut or packed to appropriate size to fit in tight oral spaces. It is odorless and tasteless, making it more palatable for the patient.

Features:

- Sterile
- Neutral PH
- Soluble
- Transparent Gel
- Odorless
- Binds and Activates Platelets
- Tasteless
- Made of 100% Natural Cellulose

Benefits

- Ready for Immediate Use Out of Package
- Cut or Folded to Desired Size & Shape - Acts In Seconds
- Fast Clot Formation to Reduce Healing Time and Quickly Control Bleeding
- Becomes Transparent For Non-Disruptive Wound Monitoring
- No Tissue Irritation or Potential Issue with Nerve Proximity



SKU# SDWD-01 / 40 per box

Unify® Resorbable Sutures




Needle Size	Needle Spec.	Thread Size (USP)	Thread Length	Thread Color	Item #	Box (12pks)
PGA Comparable to Vicryl® and Polysorb® **						
Medium PS-2 / FS-2 (P-12)	19 MM	 3/8 CIRCLE	3/0	30" (75cm)	Violet	M-G330R19
			4/0	30" (75cm)	Violet	M-G430R19
Medium PS-2 / FS-2 (P-12)	19 MM	 3/8 CIRCLE	3/0	18" (45cm)	Violet	M-G318R19
			4/0	18" (45cm)	Violet	M-G418R19
			5/0	18" (45cm)	Violet	M-G518R19
Medium PS-3 (P-11)	16 MM	 3/8 CIRCLE	4/0	18" (45cm)	Violet	M-G418R16
			5/0	18" (45cm)	Violet	M-G518R16
Small P-3 (P-13)	13 MM	 3/8 CIRCLE	4/0	18" (45cm)	Violet	S-G418R13
			5/0	18" (45cm)	Violet	S-G518R13
			5/0	18" (45cm)	Violet	S-G618R13
PGCL Comparable to Monocryl® *						
Medium PS-2 / FS-2 (P-12)	19 MM	 3/8 CIRCLE	3/0	30" (75cm)	Undyed	M-Q330R19
			4/0	30" (75cm)	Undyed	M-Q430R19
			3/0	18" (45cm)	Violet	M-Q318R19-C
			4/0	18" (45cm)	Violet	M-Q418R19-C
			5/0	18" (45cm)	Violet	M-Q518R19-C
Small P-3 (P-13)	13 MM	 3/8 CIRCLE	4/0	18" (45cm)	Violet	S-Q418R13-C
			5/0	18" (45cm)	Violet	S-Q518R13-C
			6/0	18" (45cm)	Undyed	S-Q618R13
PDO Comparable to PDS II® * and Maxon® **						
Medium PS-2 / FS-2 (P-12)	19 MM	 3/8 CIRCLE	3/0	30" (75cm)	Violet	M-D330R19
			4/0	30" (75cm)	Violet	M-D430R19
			3/0	18" (45cm)	Violet	M-D318R19
			4/0	18" (45cm)	Violet	M-D418R19
			5/0	18" (45cm)	Violet	M-D518R19
Medium PS-3 (P-11)	16 MM	 3/8 CIRCLE	4/0	18" (45cm)	Violet	M-D418R16
			5/0	18" (45cm)	Violet	M-D518R16
Small P-3 (P-13)	13 MM	 3/8 CIRCLE	4/0	18" (45cm)	Violet	S-D418R13
			5/0	18" (45cm)	Violet	S-D518R13
			6/0	18" (45cm)	Violet	S-D618R13

Unify® Resorbable Sutures










Needle Size	Needle Spec.	Thread Size (USP)	Thread Length	Thread Color	Item #	Box (12pks)
CHROMIC GUT Premium+						
Medium PS-2 / FS-2 (P-12)		3/0	27" (69cm)	Brown	PMC-327R19	
		4/0	27" (69cm)	Brown	PMC-427R19	
		3/0	18" (45cm)	Brown	PMC-318R19	
		4/0	18" (45cm)	Brown	PMC-418R19	
Medium PS-3 (P-11)		4/0	18" (45cm)	Brown	PMC-418R16	
		5/0	18" (45cm)	Brown	PMC-518R16	
Small P-3 (P-13)		5/0	18" (45cm)	Brown	PSC-518R13	
		6/0	18" (45cm)	Brown	PSC-618R13	
PLAIN GUT Premium+						
Medium PS-2 / FS-2 (P-12)		3/0	27" (69cm)	Beige	PMJ-327R19	
		4/0	27" (69cm)	Beige	PMJ-427R19	
		3/0	18" (45cm)	Beige	PMJ-318R19	
		4/0	18" (45cm)	Beige	PMJ-418R19	
Small P-3 (P-13)		4/0	18" (45cm)	Beige	PSJ-418R13	
		5/0	18" (45cm)	Beige	PSJ-518R13	
		6/0	18" (45cm)	Beige	PSJ-618R13	

Unify® Non-Resorbable Sutures

PTFE Comparable to Cytoplast® *** PTFE Sutures

Medium PS-2 / FS-2 (P-12)	19 MM 	2/0	18" (45cm)	Undyed	M-F218R19
		3/0	18" (45cm)	Undyed	M-F318R19
		4/0	18" (45cm)	Undyed	M-F418R19
Medium PS-3 (P-11)	16 MM 	3/0	18" (45cm)	Undyed	M-F318R16
		4/0	18" (45cm)	Undyed	M-F418R16
Small P-3 (P-13)	13 MM 	4/0	18" (45cm)	Undyed	S-F418R13
		5/0	18" (45cm)	Undyed	S-F518R13
		6/0	18" (45cm)	Undyed	S-F618R13

Unify® Non-Resorbable Sutures

Needle Size	Needle Spec.	Thread Size (USP)	Thread Length	Thread Color	Item #	Price/Box (12pk)
SILK Comparable to Perma-hand® * and Sofsilk® **						
Medium PS-2 / FS-2 (P-12)	19 MM  3/8 CIRCLE	3/0	30" (75cm)	Black	M-S330R19 M-S430R19	
		4/0	30" (75cm)	Black		
Medium PS-2 / FS-2 (P-12)	19 MM  3/8 CIRCLE	3/0	18" (45cm)	Black	M-S318R19 M-S418R19 M-S518R19	
		4/0	18" (45cm)	Black		
		5/0	18" (45cm)	Black		
Medium PS-3 (P-11)	16 MM  3/8 CIRCLE	4/0	18" (45cm)	Black	M-S418R16 M-S518R16	
		5/0	18" (45cm)	Black		
Small P-3 (P-13)	13 MM  3/8 CIRCLE	4/0	18" (45cm)	Black	S-S418R13 S-S518R13 S-S618R13	
		5/0	18" (45cm)	Black		
		5/0	18" (45cm)	Black		
POLYPROPYLENE Comparable to Prolene® * and Surgipra II® **						
Medium PS-2 / FS-2 (P-12)	19 MM  3/8 CIRCLE	3/0	30" (75cm)	Blue	M-P330R19 M-P430R19 M-P318R19 M-P418R19 M-P518R19	
		4/0	30" (75cm)	Blue		
		3/0	18" (45cm)	Blue		
		4/0	18" (45cm)	Blue		
		5/0	18" (45cm)	Blue		
Medium PS-3 (P-11)	16 MM  3/8 CIRCLE	4/0	18" (45cm)	Blue	S-P418R16 S-P518R16	
		5/0	18" (45cm)	Blue		
Medium P-3 (P-13)	13 MM  3/8 CIRCLE	4/0	18" (45cm)	Blue	S-P418R13 S-P518R13 S-P618R13	
		5/0	18" (45cm)	Blue		
		6/0	18" (45cm)	Blue		
NYLON Comparable to Ethilon® * and Monosof® **						
Medium PS-2 / FS-2 (P-12)	19 MM  3/8 CIRCLE	3/0	30" (75cm)	Black	M-N330R19 M-N430R19 M-N318R19 M-N418R19 M-N518R19	
		4/0	30" (75cm)	Black		
		3/0	18" (45cm)	Black		
		4/0	18" (45cm)	Black		
		5/0	18" (45cm)	Black		
Medium PS-3 (P-11)	16 MM  3/8 CIRCLE	4/0	4/0 18" (45cm)	Black	M-N418R16 M-N518R16	
		5/0	5/0 18" (45cm)	Black		
Small P-3 (P-13)	13 MM  3/8 CIRCLE	4/0	18" (45cm)	Black	S-N418R13 S-N518R13 S-N618R13	
		5/0	5/0 18" (45cm)	Black		
		6/0	6/0 18" (45cm)	Black		

Optimize Patient Success!



- Faster Healing
- Less Pain
- Less Scarring

PROCESS FOR PRF
CHOUKROUN PRF SYSTEM



DUO Quattro Centrifuge

Cost-effective and natural ways to regenerate tissues




The Choukroun Difference

	Choukroun PRF	Other Companies
Inventor of PRF	YES	NO
18 years of ongoing research	YES	NO
World-Wide distribution of product and lectures	YES	NO
Continuous modification of techniques based on 1,000s of clinical case reviews and research	YES	NO
Continuous review and modifications of centrifuge and blood collection tubes	YES	NO
Ongoing updates of how and where to use liquid PRF and PRF membranes based on clinical reviews and research available to Process for PRF customers	YES	NO

- Save money for your practice and begin using natural PRF in everyday practice as predictable barrier membrane, plugs for extraction sockets, and gingival grafts in periodontology
- Accelerates wound healing
- Improves bone graft stability
- Experience extensive hands-on practice performing phlebotomy techniques
- Learn an inexpensive, scientifically proven method to enhance patients' hard and soft tissue healing through the use of a simple centrifuge
- Predictable soft tissue regeneration centrifuge

BUY 5 & GET A FREE NEEDLE HOLDER OR SUTURE SCISSORS



OPTION 1
Buy 5 12 Pack Boxes
of PGA or PTFE Sutures

OPTION 2
Buy 5 Helimend
Collagen Membranes

OPTION 3
Buy 5 Neomem FlexPlus
Collagen Membranes

Compliments of DIT
(800) 482-0582
www.DIT-USA.com

BUY 5 BOXES OF NEOMEM RESORBABLE COLLAGEN MEMBRANES RECEIVE ONE FREE

**LIMITED TIME OFFER
MAY 1ST – OCTOBER 31ST
2022**



* CAN COMBINE SIZES
15 x 20MM / 20 x 30MM / 30 x 40MM

NEOMEM
Resorbable Collagen Membranes
CITAGENX

BUY 5 BOXES OF OSTEOGEN® PLUGS (SLIM OR LARGE*) RECEIVE A FREE EXTRACTION KIT

* CAN COMBINE SLIM OR LARGE



OSTEOGEN PLUG
Extraction Kit
CITAGENX

BUY 5 GET ONE FREE ON OSSGUIDE® ABSORBABLE PORCINE COLLAGEN MEMBRANES



OssGuide®

15x20mm **\$65** 20x30mm **\$89** 30x40mm **\$149**



Salus Medical

2202 West Lone Cactus Dr. Ste 15 | Phoenix, AZ 85027

888-566-3778 | www.salusmedicalrx.com